

# **neubau T631**

# **Technical Information**

# Walter and Wassily



# glazing

## RECOMMENDATION FOR OPTICAL LENSES:

- Base curve 4 fits best
- All lens materials are possible

## GLAZING AIDS:

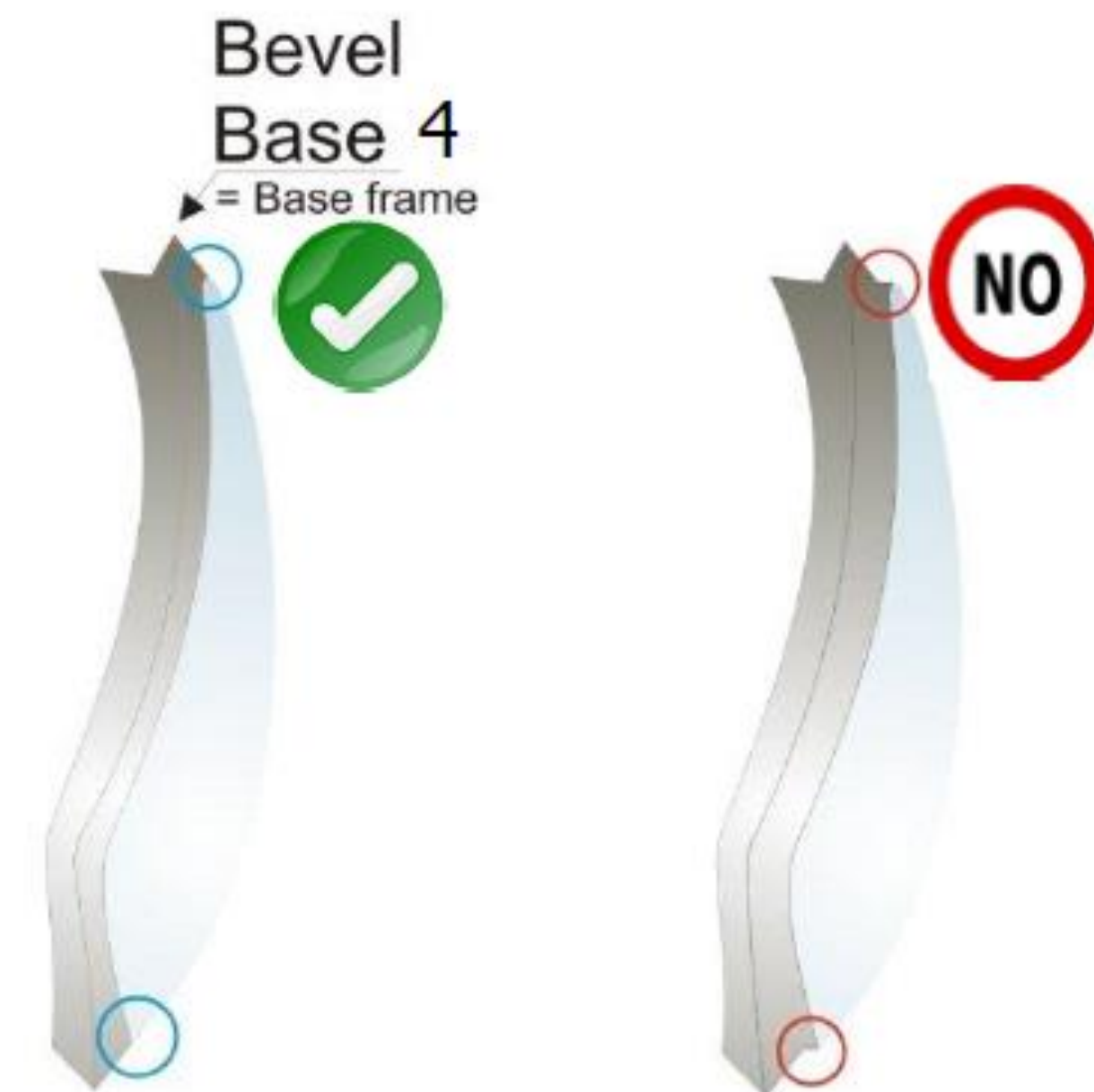
- OMA electronic shape files available on Silhouette portal

COLD INSERT LENSES – DO NOT HEAT THE EYEWIRE!



# glazing

- It would be best to make prescription lenses on a 4 base curve
- Lenses should be prescription compensated to reflect the 4 base
- Please make sure the bevel of the prescription lens is ground as close to the front side of the lens as possible

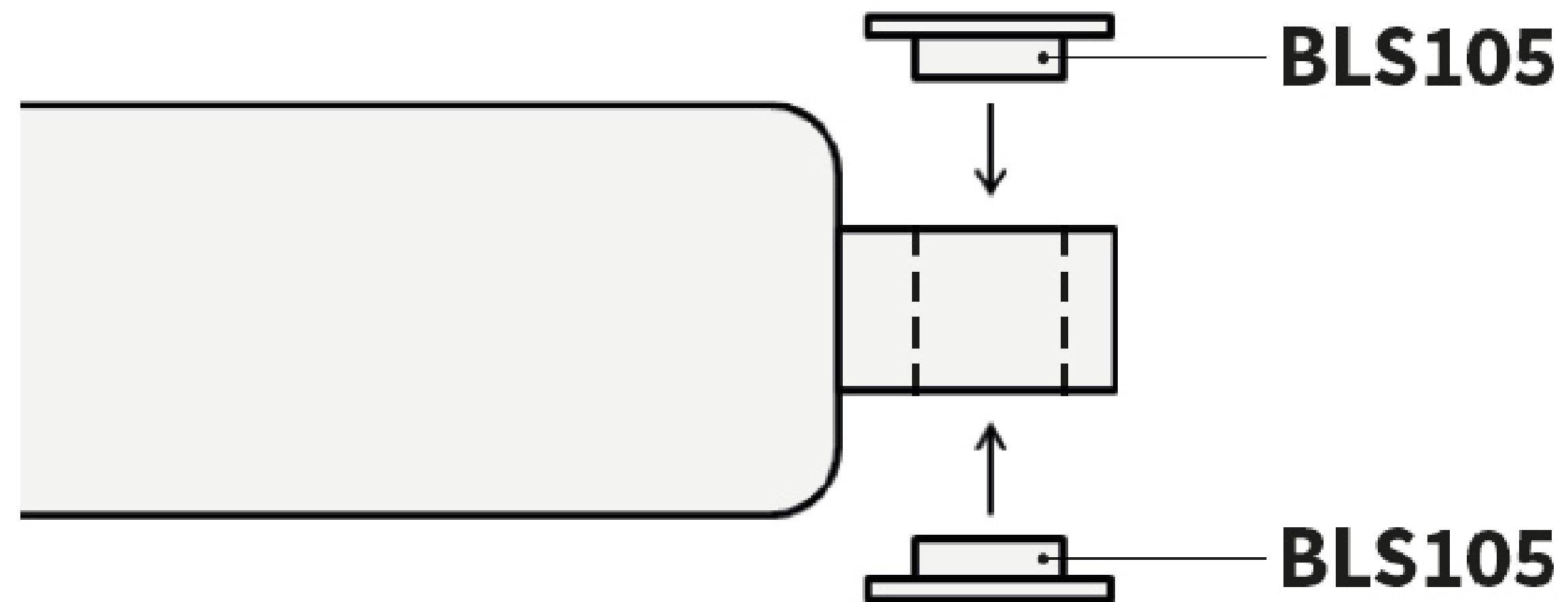


# glazing



Best edging results are achieved using OMA shape files or frame tracing

# temple changing



Before mounting temples make sure that the BLS 105 washers are installed!

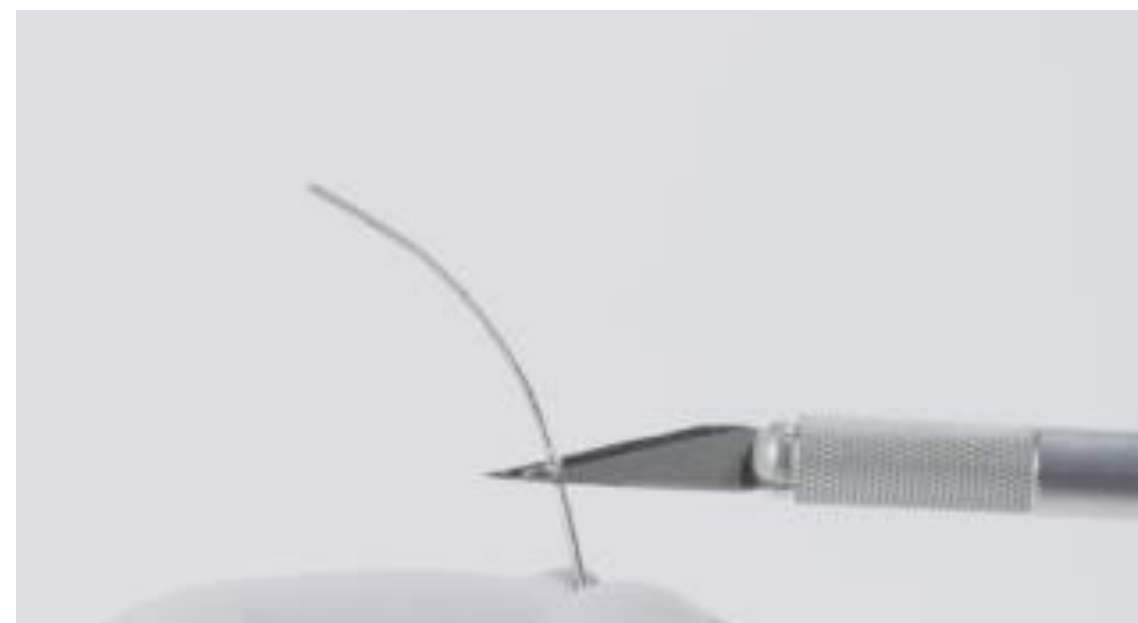
# temple shortening



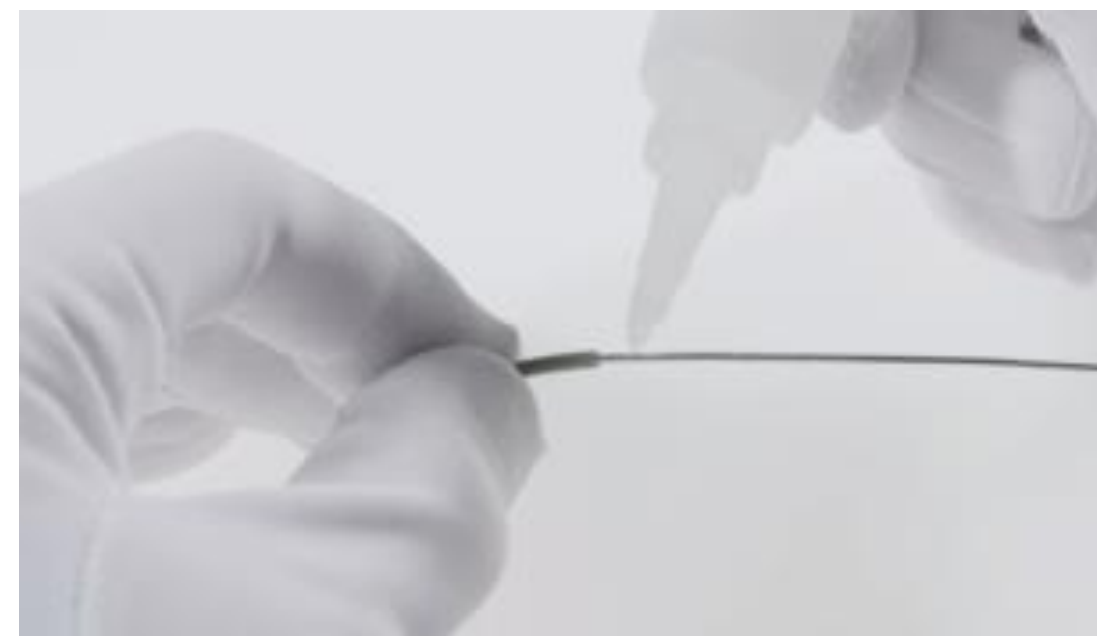
Remove temple cover and shorten stainless steel with diagonal cutter



File down sharp edges and burrs



Carefully remove glue residue



Mount temple cover and use glue if necessary

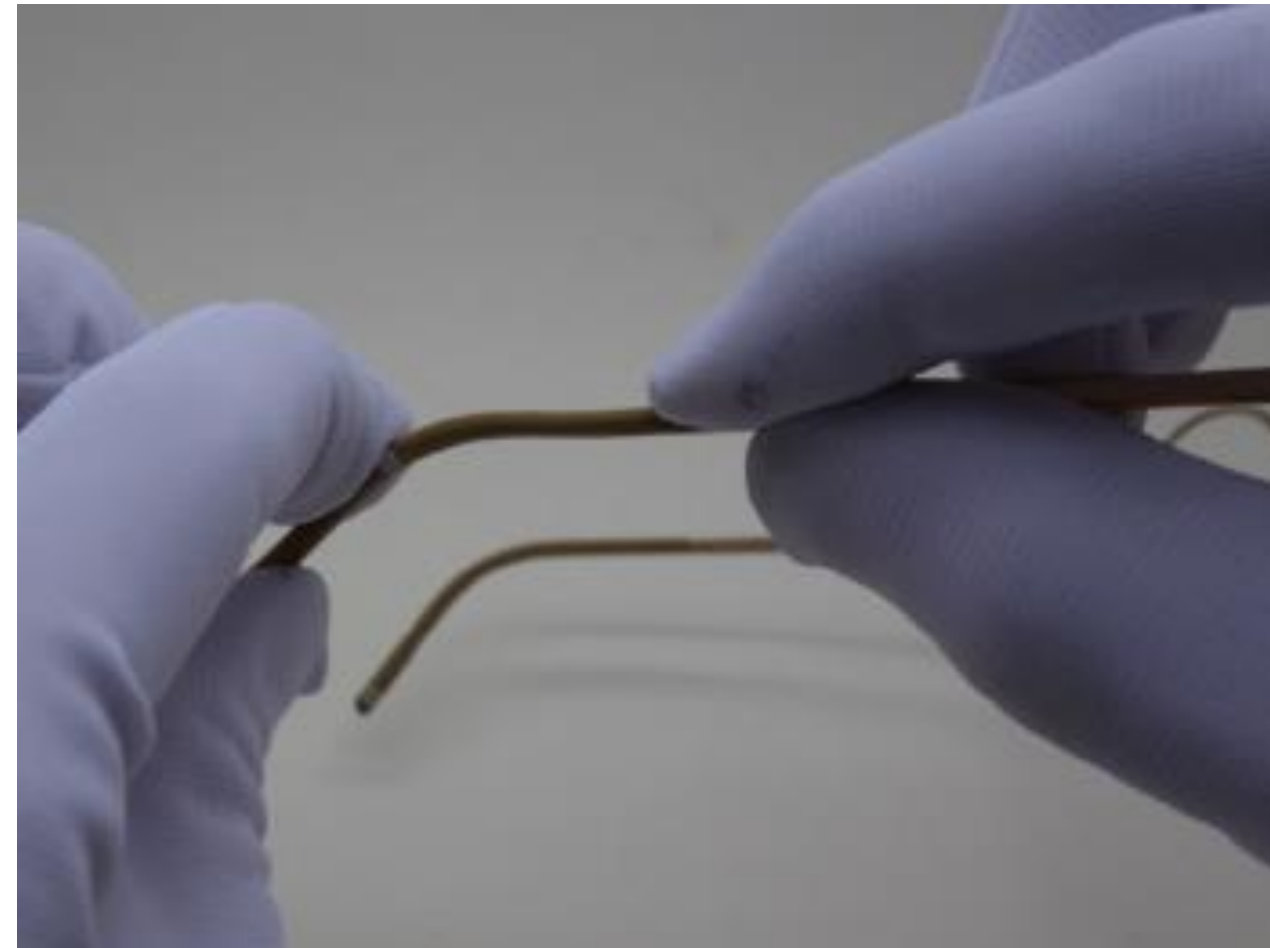
# temple adjustment



If hinges loosen after adjusting the inclination and tightening the screws, remove temple and tighten the hinge fingers using padded pliers



# temple adjustment



Straighten the temple end in small steps



Adjust temple end by bending it in large curves

A small amount of heat may be applied to the temple cover for easier bending



**( ) neubau**